

Technical Information

Designation: Barium Titanate

Part No : BT-B1

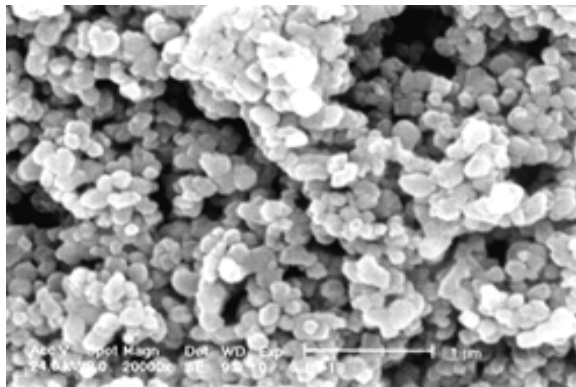
Molecular formula: BaTiO₃

Molecular weight: 233.21

● **Physical character:**

1、 **Particle size: D50:0.5~1.0 (μm)**

2、 **Particle decentralization: ×20000**



SEM of BaTiO₃

3、 **Surface area: (m²/g) , < 1.0-3.0** 4、 **Ba/Ti ratio: 1.000±0.005**

5、 **Loss on ignition: (800°C/2hr) , <% 0.20** 6、 **Phase: Tetragonal**

Chemical character:

1、 **Main content: BaTiO₃ %, ≥ 99.7**

2、 **Impurity**

Impurity analysis	Content (<wt%)
CaO	0.005
Al₂O₃	0.003
Fe₂O₃	0.002
K₂O	0.005
Na₂O	0.005
CuO	0.001
SiO₂	0.003
SrO	0.002
MgO	0.002

Technical Information

Designation: Barium titanate

Part No : BT-B2

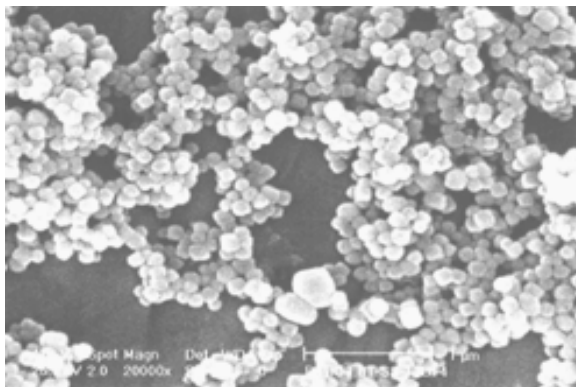
Molecular formula: BaTiO₃

Molecular weight: 233.21

● **Physical character:**

1、 Particle size, D₅₀: 0.5~1.0 (μm)

2、 Particle decentralization: ×20000



SEM of BaTiO₃

3、 Surface area: (m²/g) , > 4.0-6.0 4、 Ba/Ti ratio: 1.000±0.005

5、 Loss on ignition: (800 °C /2hr) ,<% 0.30 6、 Phase: Cubic

● **Chemical character:**

1、 Main content: BaTiO₃ %, ≥ 99.7

2、 Impurity

Impurity analysis	Content (<wt%)
CaO	0.003
Al ₂ O ₃	0.002
Fe ₂ O ₃	0.005
K ₂ O	0.005
Na ₂ O	0.001
CuO	0.003
SiO ₂	0.002
SrO	0.002
MgO	0.005

Technical Information

Designation: Barium titanate

Part No : BTS-A03

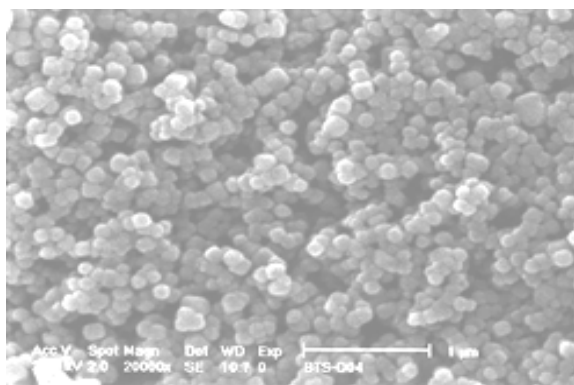
Molecular formula: BaTiO₃

Molecular weight: 233.21

● **Physical character:**

3、 Particle size: D50, 0.1~0.3 (μm)

4、 Particle decentralization: ×20000



SEM of BaTiO₃

3、 Surface area: (m²/g) , 10.0~13.0 4、 Ba/Ti ratio: 1.000±0.005

5、 Loss on ignition: (800 °C /2hr) ,<% 0.30 6、 Phase: Tetragonal

● **Chemical character:**

1、 Main content: BaTiO₃ % , ≥ 99.7

2、 Impurity:

Impurity analysis	Content (<wt%)
CaO	0.003
Al ₂ O ₃	0.002
Fe ₂ O ₃	0.005
K ₂ O	0.005
Na ₂ O	0.001
CuO	0.003
SiO ₂	0.002
SrO	0.002
MgO	0.005

Technical Information

Designation: Barium titanate

Part No : BTS-A05

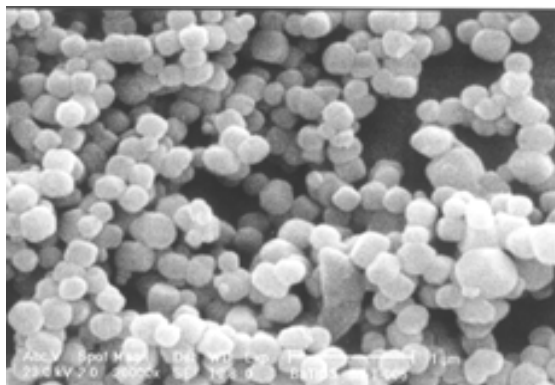
Molecular formula: BaTiO₃

Molecular weight: 233.21

● **Physical character:**

5、 Particle size: D50, 0.5~1.0 (μm)

6、 Particle decentralization: ×20000



SEM of BaTiO₃

3、 Surface area: (m²/g) , 3.0~5.0 4、 Ba/Ti ratio: 1.000±0.005

5、 Loss on ignition: (800 °C /2hr) ,<% 0.20 6、 Phase: Tetragonal

● **Chemical character:**

1、 Main content: BaTiO₃ %≥ 99.7

2、 Impurity:

Impurity analysis	Content (<wt%)
CaO	0.003
Al ₂ O ₃	0.002
Fe ₂ O ₃	0.005
K ₂ O	0.005
Na ₂ O	0.001
CuO	0.003
SiO ₂	0.002
SrO	0.002
MgO	0.005